



PROPOSED INSIDE CONCRETE GUTTER (SEE DETAILS)

LEGEND:

— 3.25m HEIGHT FROM SIDEWALK LEVEL TO TOP OF CONCRETE MOULDING CROWN

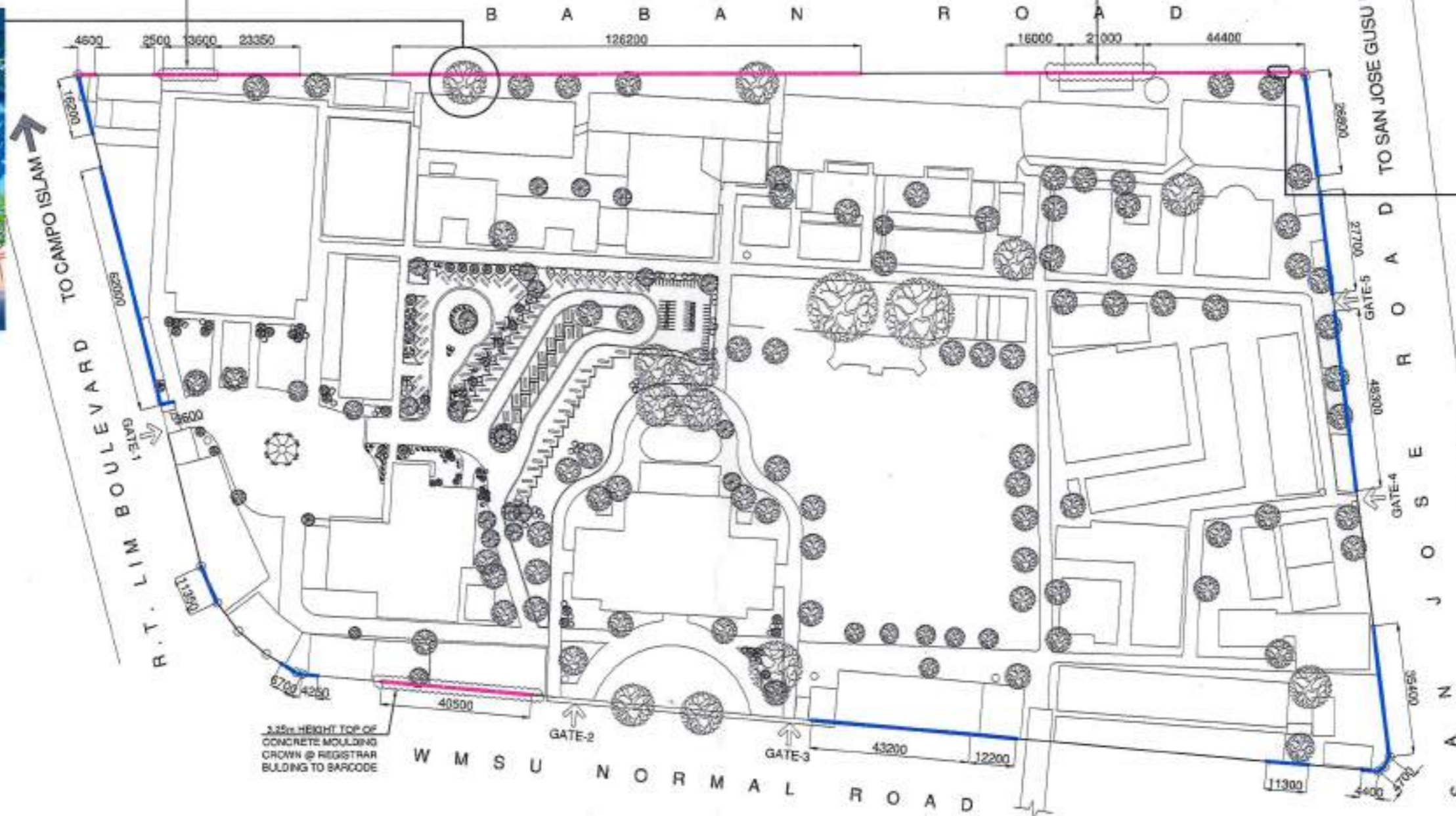
— 2.5m HEIGHT FROM SIDEWALK LEVEL TO TOP OF CONCRETE MOULDING CROWN



PROPOSED INSIDE CONCRETE GUTTER (SEE DETAILS)



MAHOGANY TREE TO BE CUT DOWN



EXISTING LOUVER WINDOW TO BE REMOVED AND FILLED WITH CONCRETE, CEMENT PLASTER AND PAINT FINISH (COLOR: TO ARCHITECT'S APPROVAL)

TOTAL LINEAR METER :

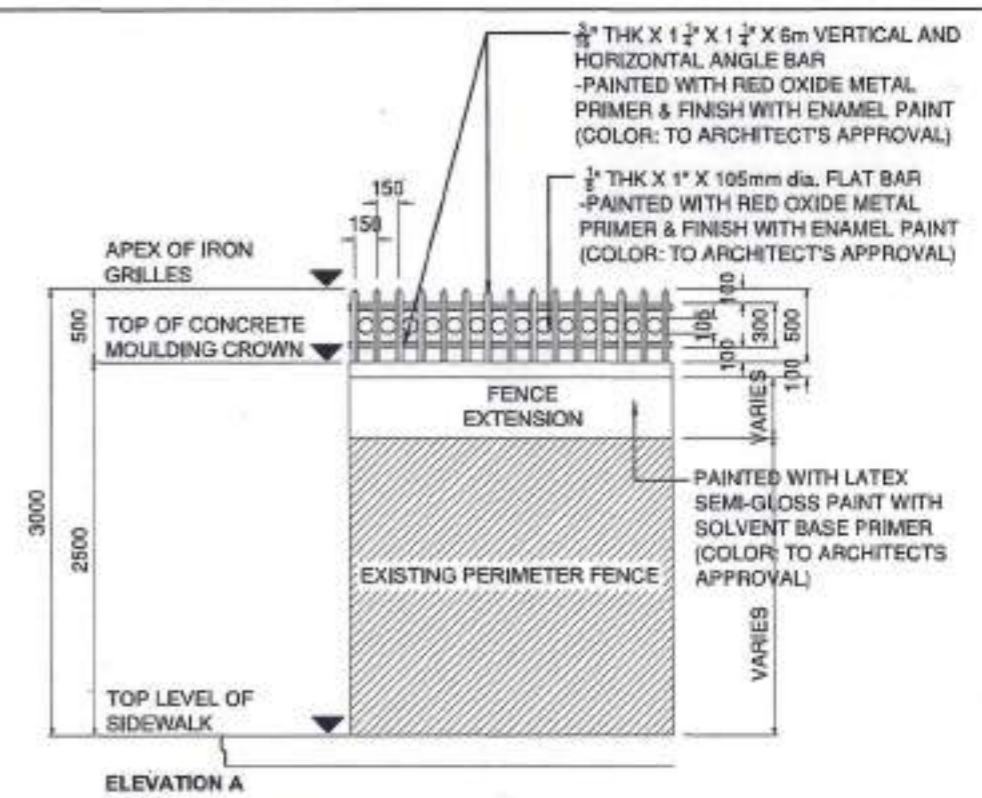
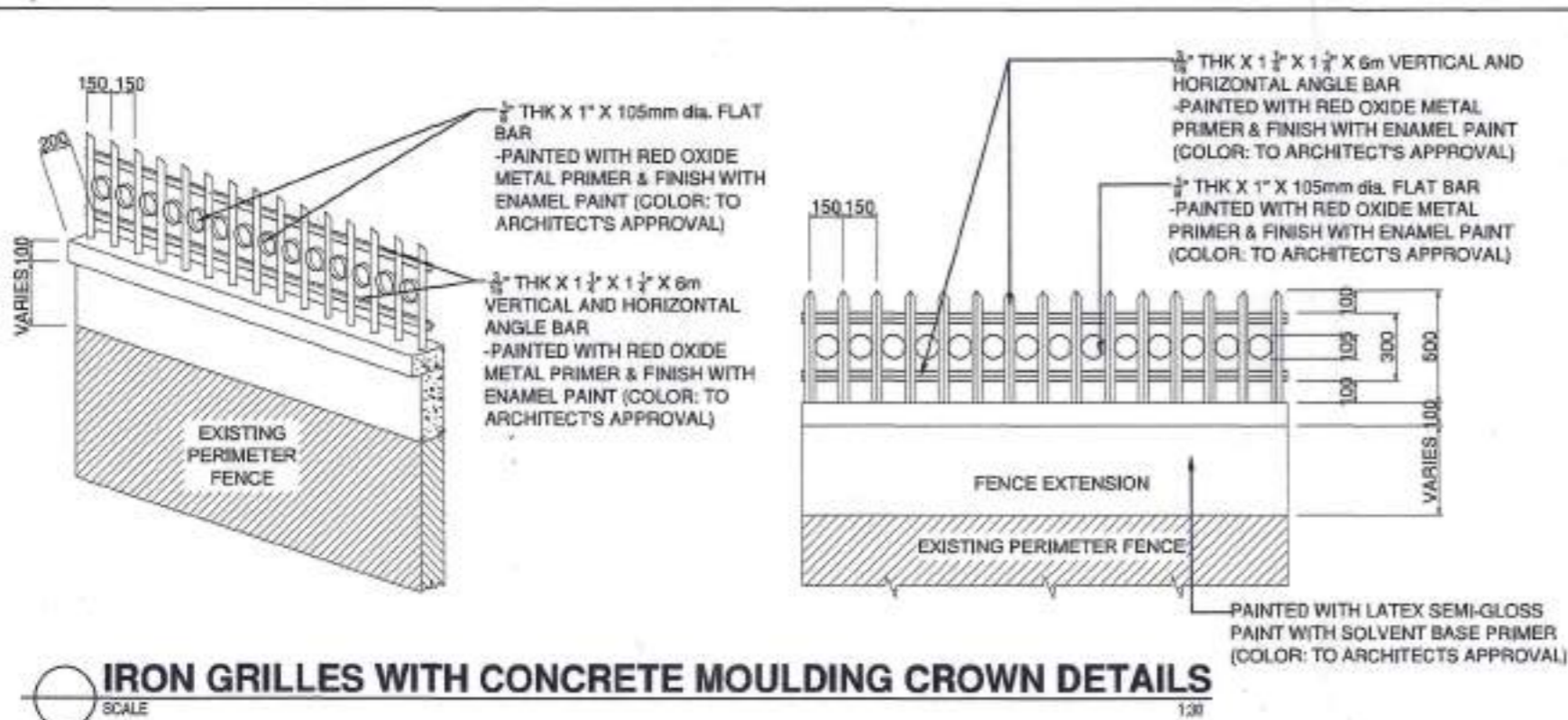
568.87 LINEAR METER

PERIMETER FENCE LAYOUT (CAMPUS-A)



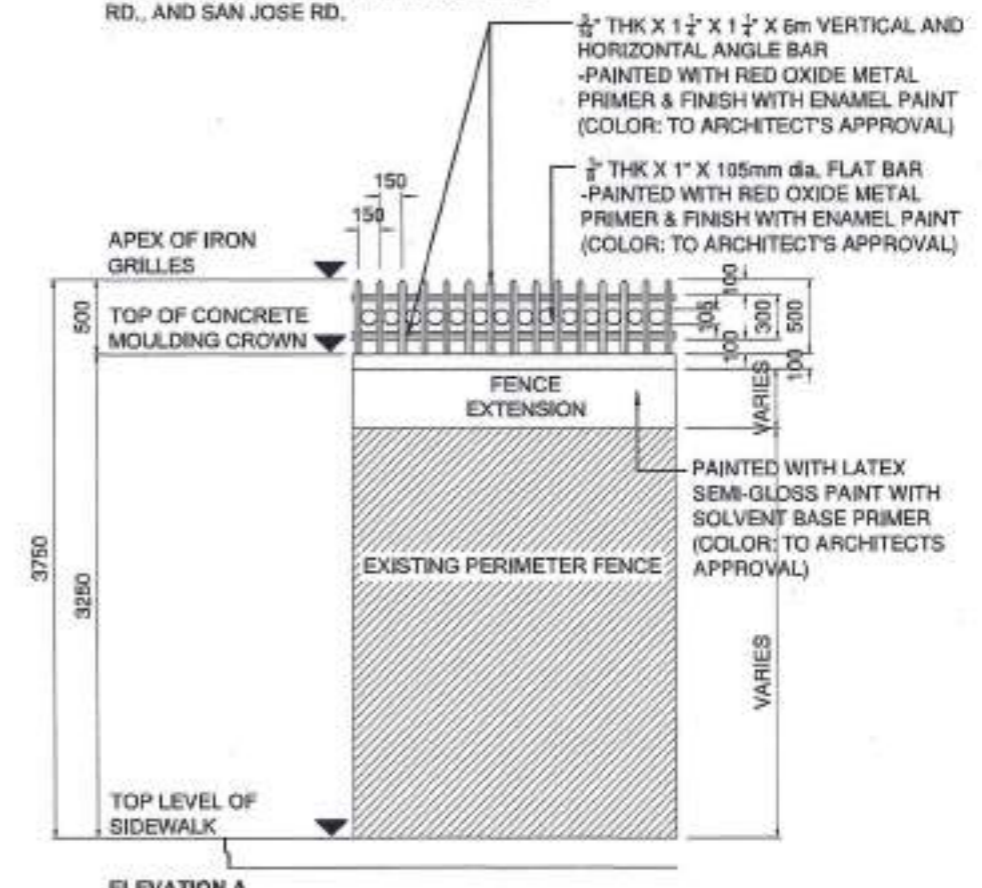
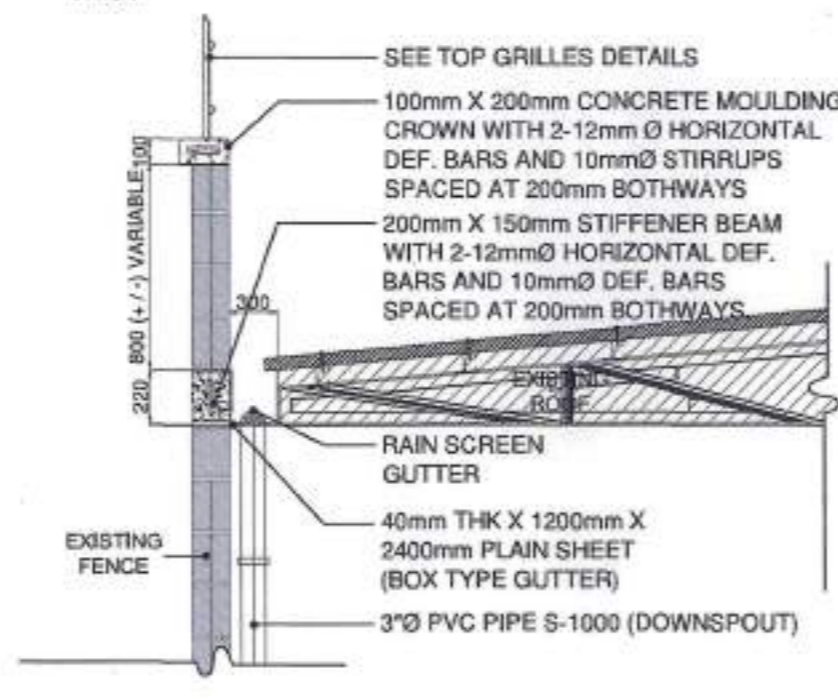
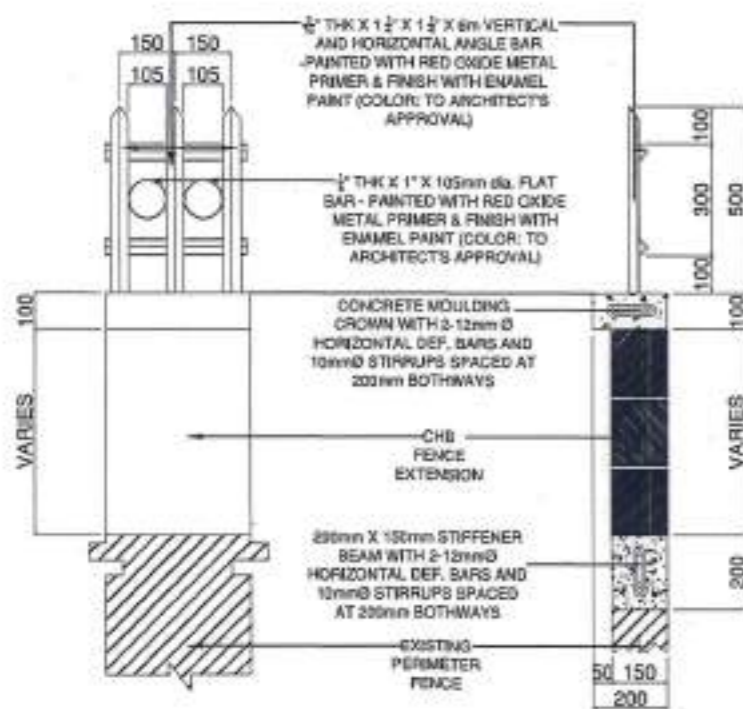
N.T.S.

	DESIGNED BY:	PROJECT TITLE:	REGISTERING:	RECOMMENDING APPROVAL:	RECOMMENDING APPROVAL:	APPROVED BY:	SHEET CONTENTS	SHEET NO.	
	ARCH. JOSEPH ANDREW L. SAHIAL UNIVERSITY ARCHITECT	REPAIR OF PERIMETER FENCE AT WMSU CAMPUS A & B	PHYSICAL PLANT AND ENGINEERING SERVICES	ARCH. JOSEPH ANDREW L. SAHIAL DIRECTOR FOR PHYSICAL PLANT & ENGINEERING SERVICES	JOSE LITO D. MADROSA, DPA VICE PRESIDENT FOR ADMINISTRATION AND FINANCE	MA. CARLA A. OCHOTORENA, RN, PhD UNIVERSITY PRESIDENT	SHEET CONTENTS - WMSU CAMPUS A & - PERIMETER FENCE LAYOUT	A1 01/06	
PRC: 001657 PTR: 279289 TIN: 445-013-228	LOCATION: WMSU LOT-A&B, BARANGAY BALIWASAN, ZC		PRC: 001657 PTR: 279289 TIN: 445-013-228				C. VILLARDO		



NOTES:

- ALL IRON GRILLES MUST BE LEVEL FROM SIDEWALK LEVEL TO APEX.
- TOP OF CONCRETE MOULDING CROWN WITH A MAXIMUM HEIGHT OF 3.25m FOR BABAN ROAD AND 2.5m HEIGHT REST

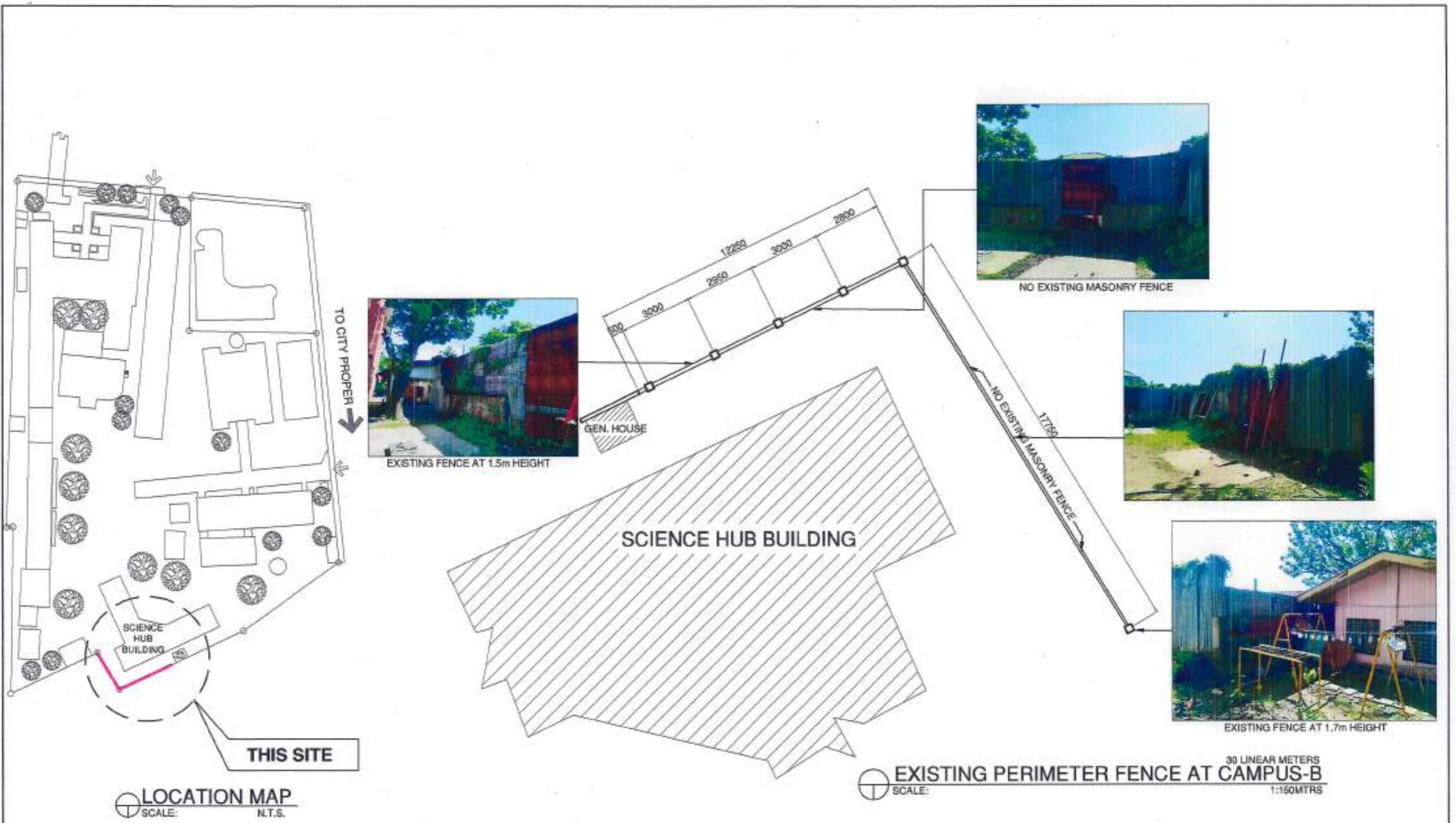


BLOW-UP DETAILS

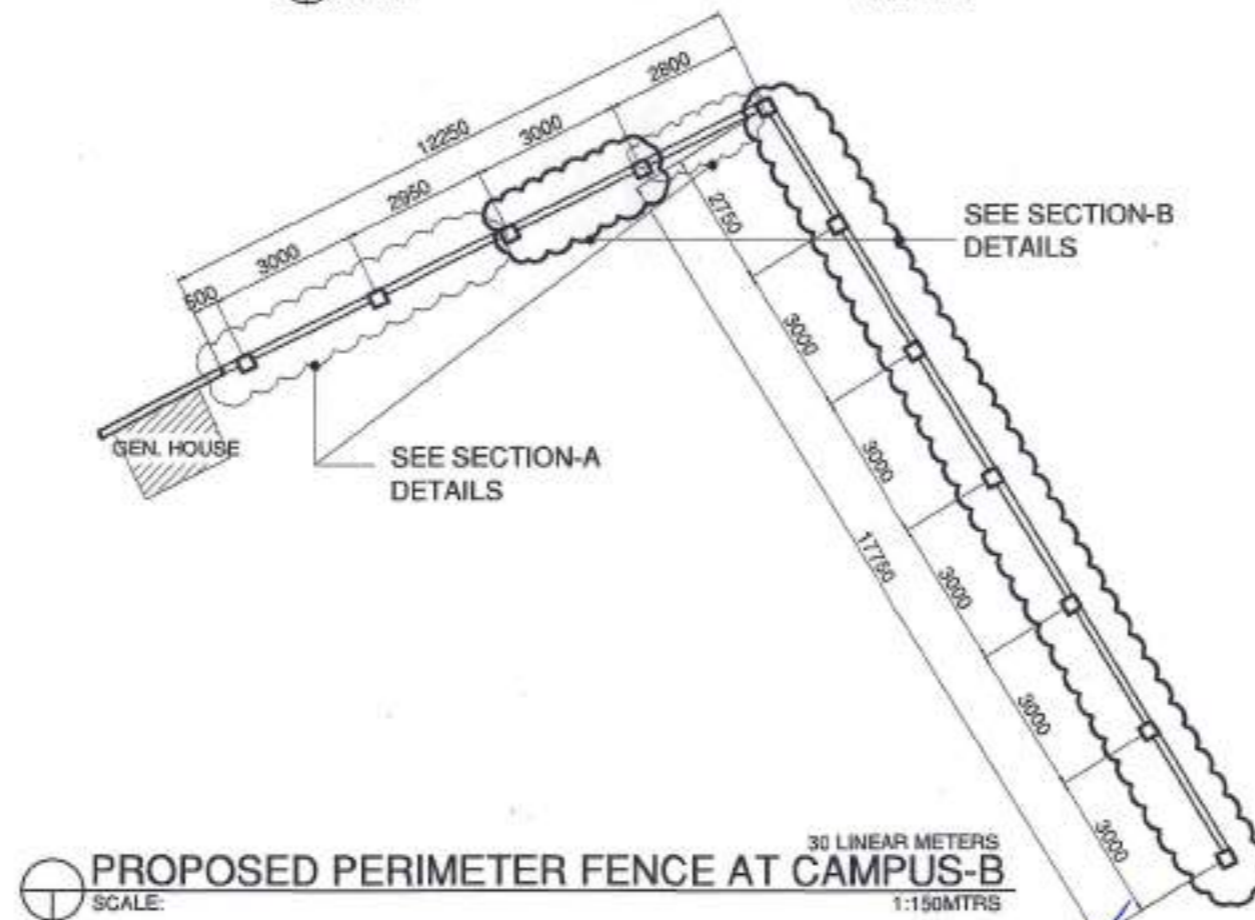
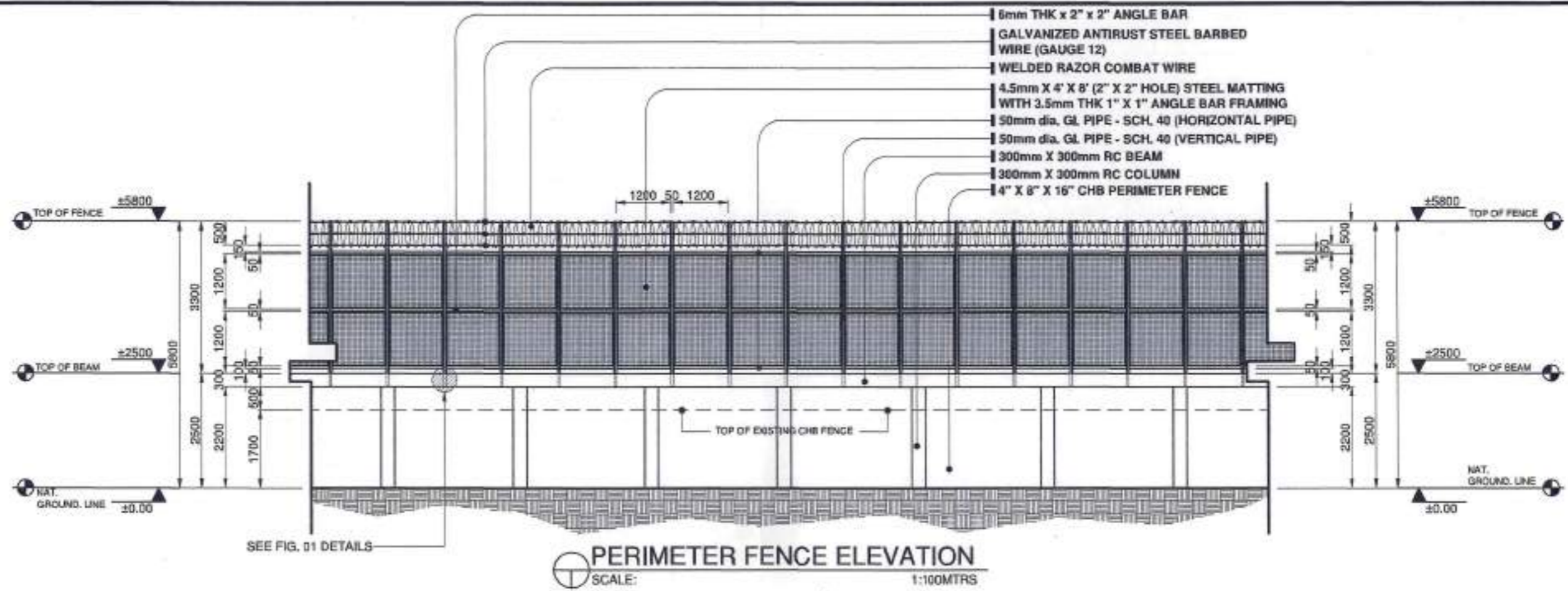
BOX TYPE INSIDE GUTTER DETAILS

CAMPUS A PERIMETER FENCE ELEVATION

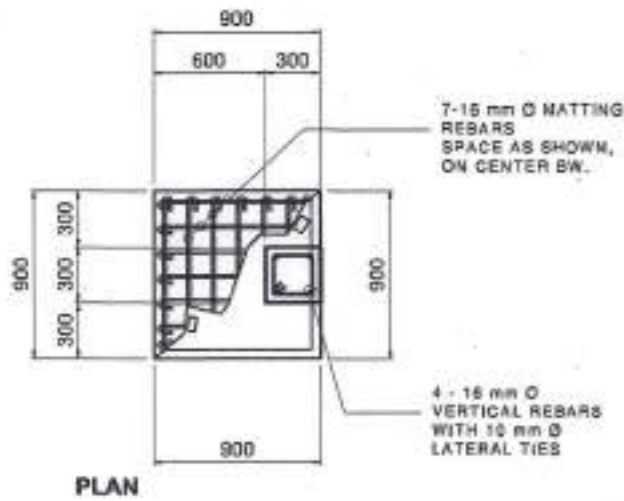
	DESIGNED BY:	PROJECT TITLE:	REQUISITIONER:	RECOMMENDATION APPROVAL:	RECOMMENDATION APPROVAL:	APPROVED BY:	SHEET CONTENTS	SHEET NO.	
	ARCH. JOSEPH ANDREW L. SARHIAL UNIVERSITY ARCHITECT	REPAIR OF PERIMETER FENCE AT WMSU CAMPUS A & B	PHYSICAL PLANT AND ENGINEERING SERVICES	ARCH. JOSEPH ANDREW L. SARHIAL DIRECTOR FOR PHYSICAL PLANT & ENGINEERING SERVICES	JOSEF TO D. MADROSA, DPA VICE PRESIDENT FOR ADMINISTRATION AND FINANCE	MA. CARLA A. ROTORENA, RN, PhD UNIVERSITY PRESIDENT	CONCRETE MOULDING CROWN DETAILS BLOW-UP DETAILS CHB FENCE AND CHB FENCE DETAILS FOR TRUSS		
PRC: 001857 PTR: 2792269 TIR: 445-013-226	LOCATION: WMSU LOT-AMB, BANGKAY BALIWASAK, ZC		PRC: 001857 PTR: 2792269 TIR: 445-013-226						



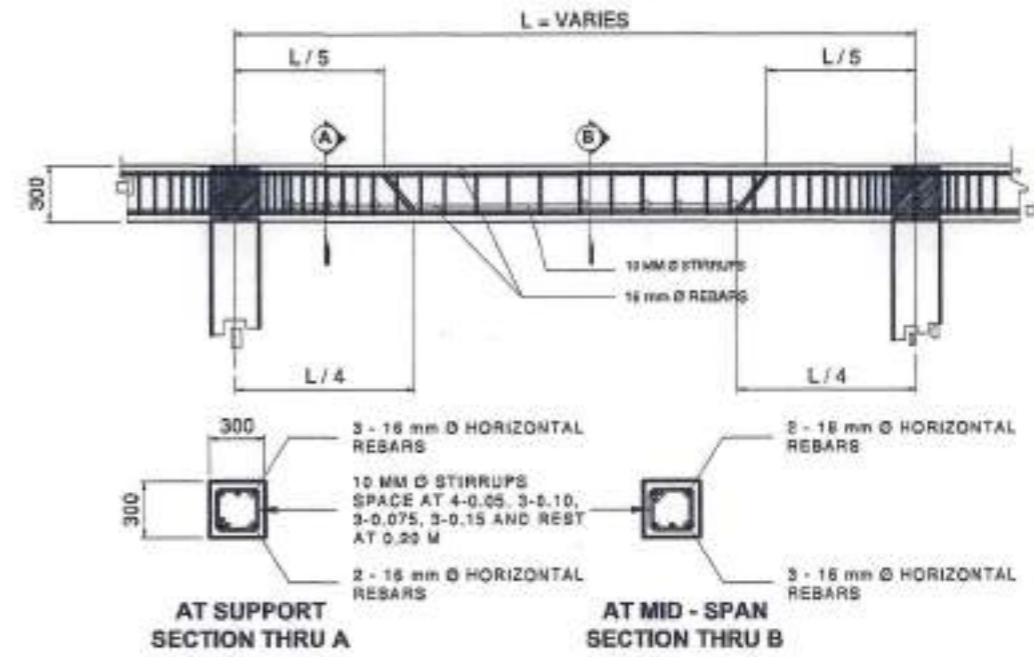
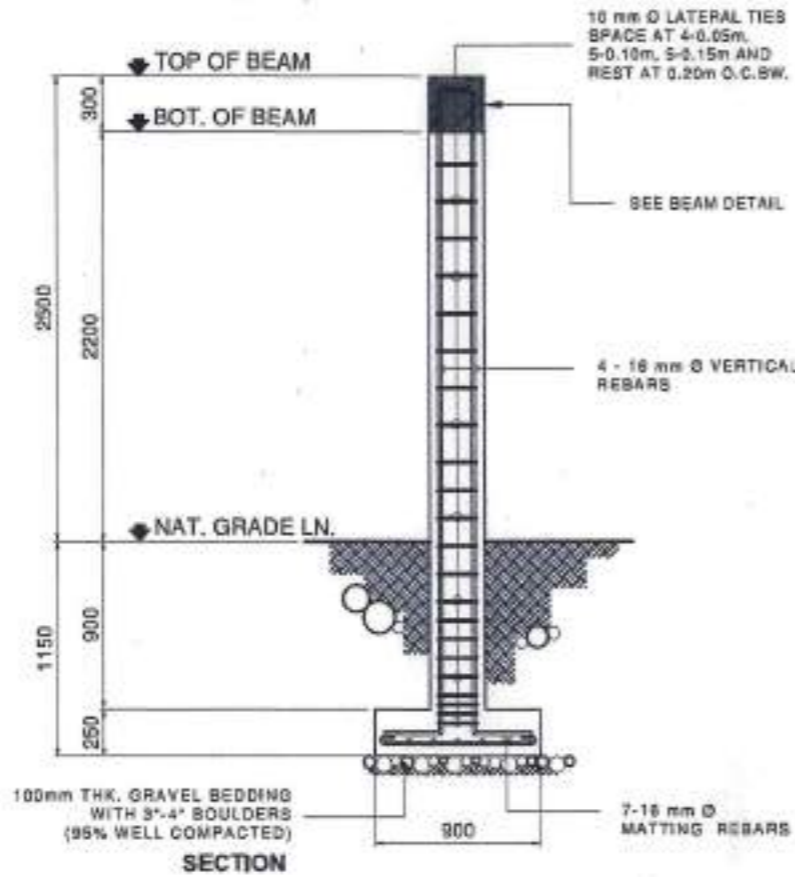
	DESIGNED BY:	PROJECT TITLE:	REGISTRAR:	RECOMMENDING APPROVAL:	RECOMMENDING APPROVAL:	APPROVED BY:	SHEET CONTENTS	SHEET NO.	
	ARCH. JOSEPH ANDREW L. SAHJAL UNIVERSITY ARCHITECT PRC: 011057 PTR: 270289 TIN: 445-013-228	REPAIR OF PERIMETER FENCE AT WMSU CAMPUS A & B LOCATION: WMSU LOT-A&B, BARANGAY BALIWASAN, ZC	PHYSICAL PLANT AND ENGINEERING SERVICES	ARCH. JOSEPH ANDREW L. SAHJAL DIRECTOR FOR PHYSICAL PLANT & ENGINEERING SERVICES PRC: 011057 PTR: 270289 TIN: 445-013-228	JOSELYN B. MADROÑAL, DPA DEPUTY PRESIDENT FOR ADMINISTRATION AND FINANCE	MA. CARLA A. O. MOTORENA, RN, PhD UNIVERSITY PRESIDENT	LOCATION MAP EXISTING PERIMETER PLAN DRAWN BY: C. VALERIE		



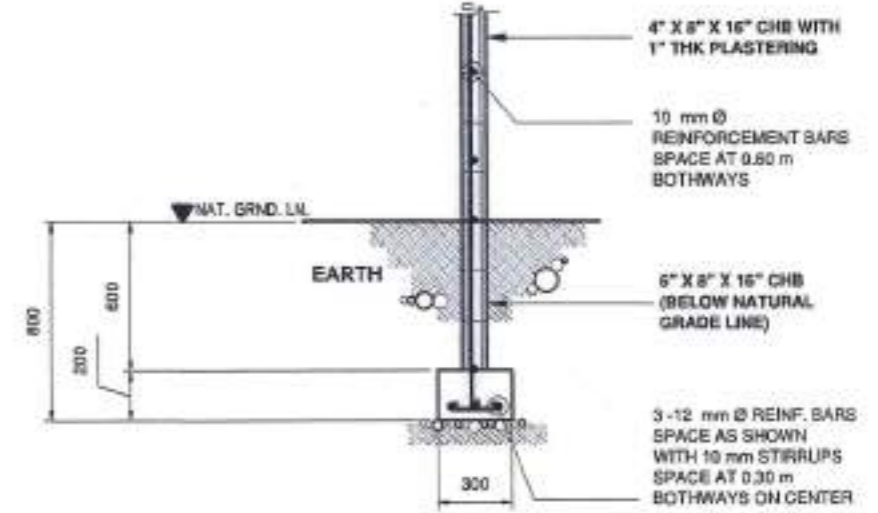
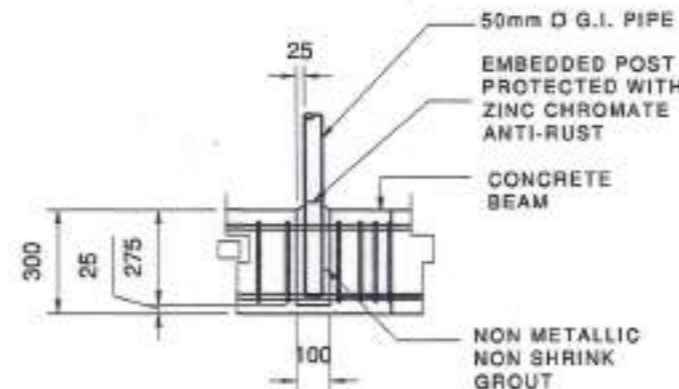
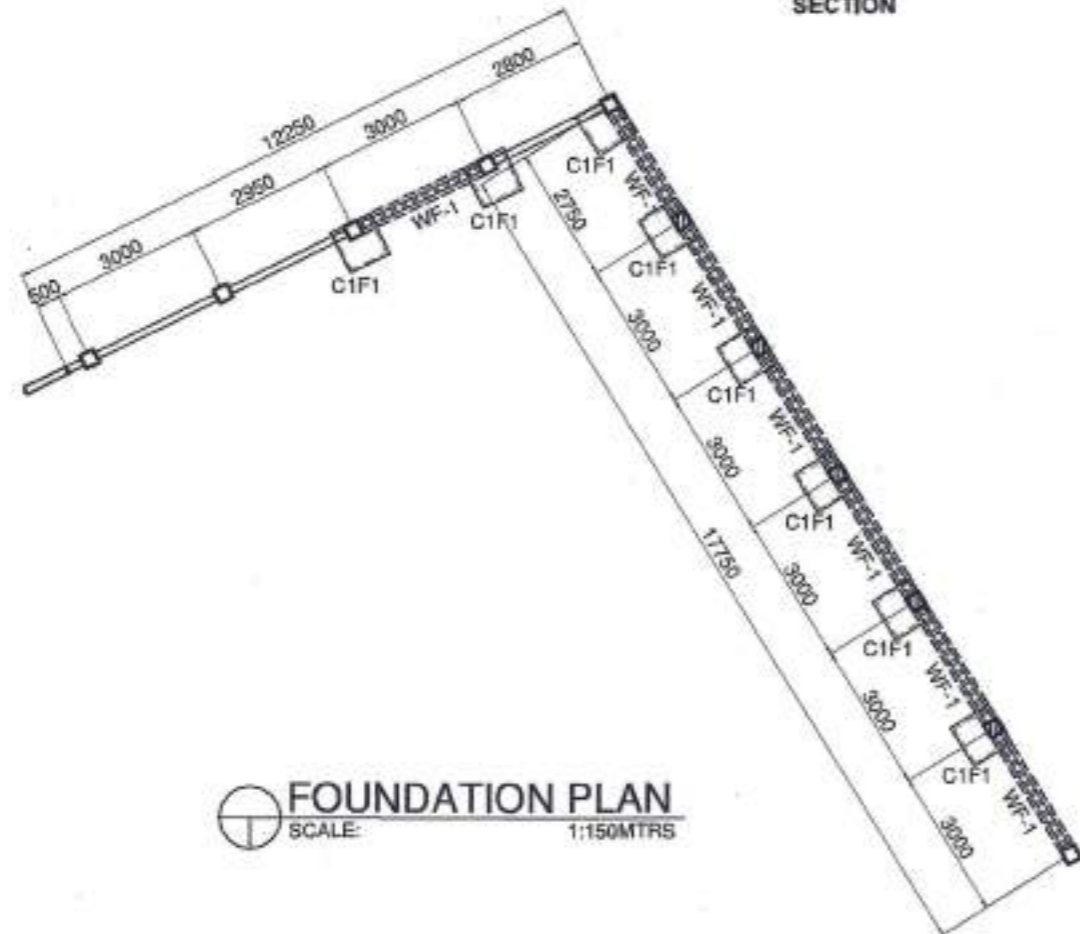
	DESIGNED BY:	PROJECT TITLE:	REQUIREMENT:	RECOMMENDING APPROVAL:	RECOMMENDING APPROVAL:	APPROVED BY:	SHEET CONTENTS	SHEET NO.	
	ARCH. JOSEPH ANDREW L. SAHAIL UNIVERSITY ARCHITECT PRC: 0010557 PTR: 2792209 TIN: 445-013-228	REPAIR OF PERIMETER FENCE AT WMSU CAMPUS A & B LOCATION: WMSU LOT-A&B, BARRANGAY BALEWASAN, ZC	PHYSICAL PLANT AND ENGINEERING SERVICES	ARCH. JOSEPH ANDREW L. SAHAIL DIRECTOR FOR PHYSICAL PLANT & ENGINEERING SERVICES PRC: 0010557 PTR: 2792209 TIN: 445-013-228	JOSELYN B. MADROSAL, DPA VICE PRESIDENT FOR ADMINISTRATION AND FINANCE	MA. CARLA A. OCHOA, R.N., PH.D. UNIVERSITY PRESIDENT	-PROPOSED PERIMETER FENCE -PERIMETER FENCE ELEVATION -FIELD DETAILS -ELEVATION C. VALERA	A4 0506	



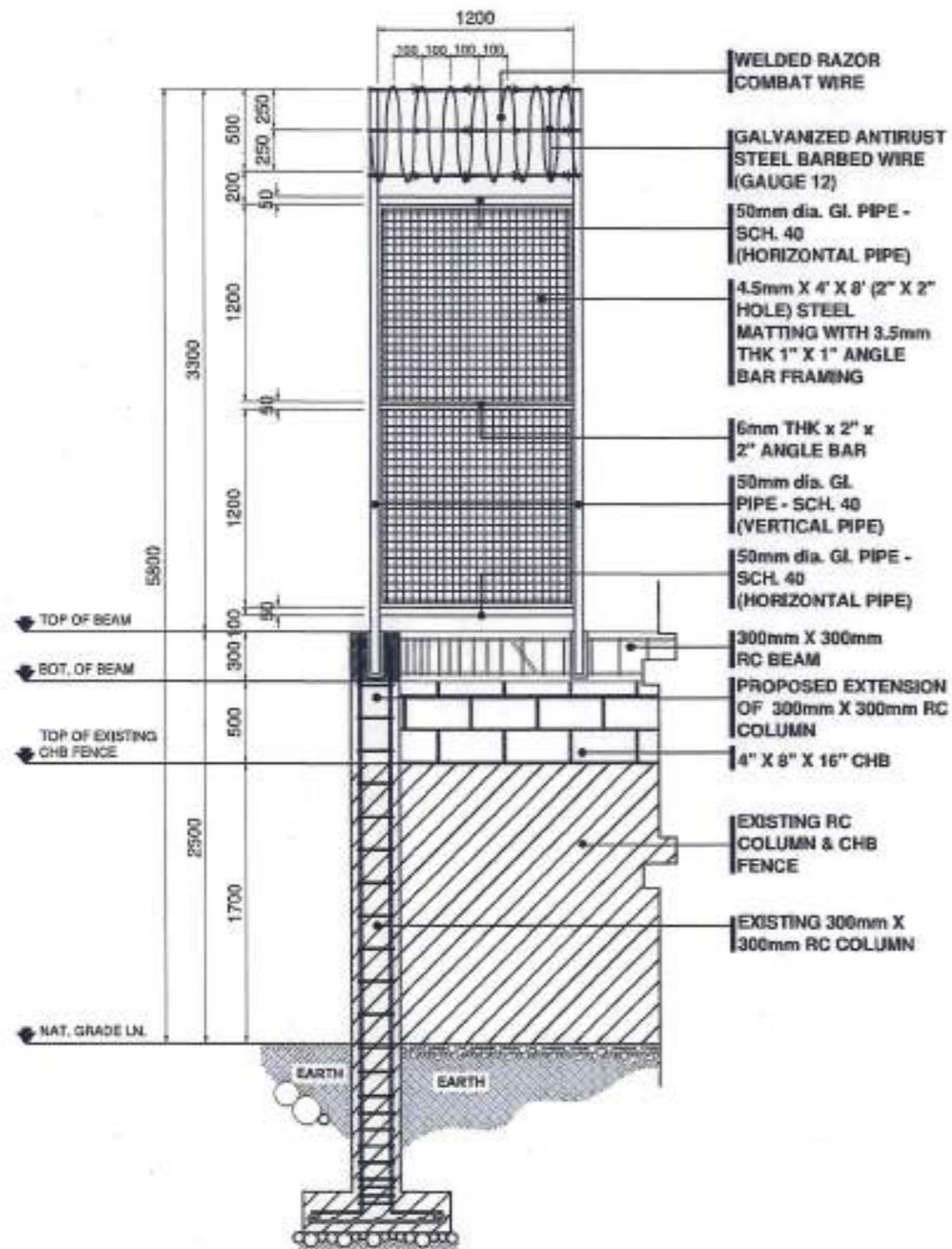
8 SETS
C1F1 DETAILS
SCALE 1:40 MTS



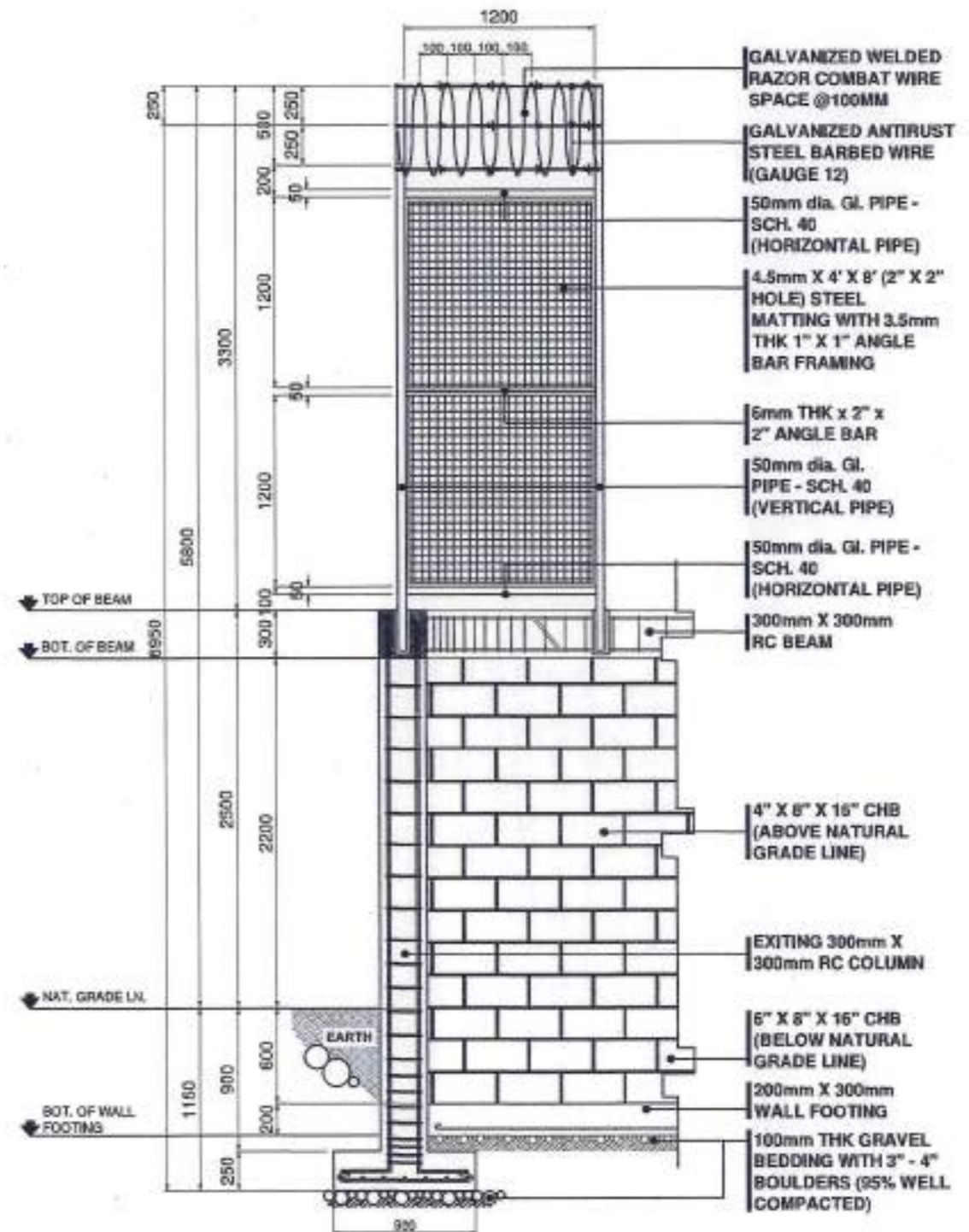
BEAM DETAILS
SCALE 1:40 MTS



	DESIGNED BY: ENGR. AHMED A. S. NURUDDIN, MS. STP. 103106 - ASSOCIATE FOR INFRASTRUCTURE	PROJECT TITLE: REPAIR OF PERIMETER FENCE AT WMSU CAMPUS A & B	REGISTRATION: PHYSICAL PLANT AND ENGINEERING SERVICES	RECOMMENDING APPROVAL: ARCELIO J. ANDREW L. SAHIAI DIRECTOR FOR PHYSICAL PLANT & ENGINEERING SERVICES	RECOMMENDING APPROVAL: JOSELYN D. MADRUGAL, DPA VICE PRESIDENT FOR ADMINISTRATION AND FINANCE	APPROVED BY: MA. CARLA A. ROTORENA, RN, PMP UNIVERSITY PRESIDENT	SHORT CONTENTS: - FOUNDATION PLAN - C1F1 DETAILS - BEAM DETAILS - FIG. 01 DETAILS - WF-1 DETAILS - REVISIONS - BRAGAN S. ARANDA	SHEET NO. S1 05/06	
	PRC: 0147752 PPL: TDC: 94972247	LOCATION: WMSU LOT-A&B, BARANGAY BALIWASAN, ZC	PRC: 000527 PTE: 279238 TTN: 465.413.224						



SECTION-A
SCALE: 1:40MTRS



SECTION-B
SCALE: 1:40MTRS

	DESIGNED BY: ENGR. AHMED ELWAN NASATREHEN, MS STE. TECHNICAL ASSOCIATE FOR INFRASTRUCTURE	PROJECT TITLE: REPAIR OF PERIMETER FENCE AT WMSU CAMPUS A & B	REGISTERED: PHYSICAL PLANT AND ENGINEERING SERVICES	ENCUMBRING APPROVAL: ARCE JOSEPH ANDREW SAHJAL DIRECTOR FOR PHYSICAL PLANT & ENGINEERING SERVICES	RECOMMENDED APPROVAL: JOSELITO B. MADROÑAL, DPA VICE PRESIDENT FOR ADMINISTRATION AND FINANCE	APPROVED BY: MA. CARLA A. MOTORENA, EN, PMP UNIVERSITY PRESIDENT	SHEET CONTENTS: -SECTION A & B DETAILS DRAWN BY: REAGAN S. BRANTO	SHEET NO. 	
	PRC: 014952 PTEL: TIN: 9497247	LOCATION: WMSU LOT-A&B, BARANGAY BALIWASAN, ZC	PRC: 081057 PTR: 279219 TR: 445-013-218						